

# Technology Alliance Program

## ABBYY's Timeline Brings Process Intelligence to Blue Prism RPA

The Blue Prism/Timeline Technology Ecosystem partnership integrates ABBYY Timeline's Process Intelligence Platform solution with Blue Prism RPA to improve automation efforts by exposing and quantifying process performance. This integration adds the critical skill of **Planning & Sequencing** to Blue Prism Intelligent Automation, giving enterprises the ability to optimally plan workflow and workload execution.

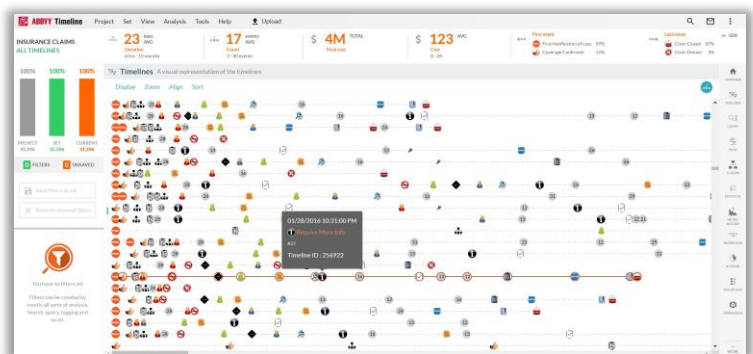
### Process Intelligence Increases the Value of RPA

Advanced process analysis ensures continuous improvement, yet organizations often struggle to quantify those processes with the greatest automation benefit. The combination of Blue Prism RPA and the Timeline solution means that enterprises can now **visualize and understand how operational processes are executed end-to-end**, in all their variations, across any number of systems. Users can also **trigger RPA processes** based on monitored process variances.

### How it Works

The combination of RPA and advanced Process Intelligence technology creates a risk and compliance framework for a Robotic Operating Model (ROM) that both monitors and assesses automated process performance regularly.

Timeline combines advanced process intelligence with real time monitoring and alerting enabled my artificial intelligence to deliver a comprehensive solution for understanding and sustaining process performance.



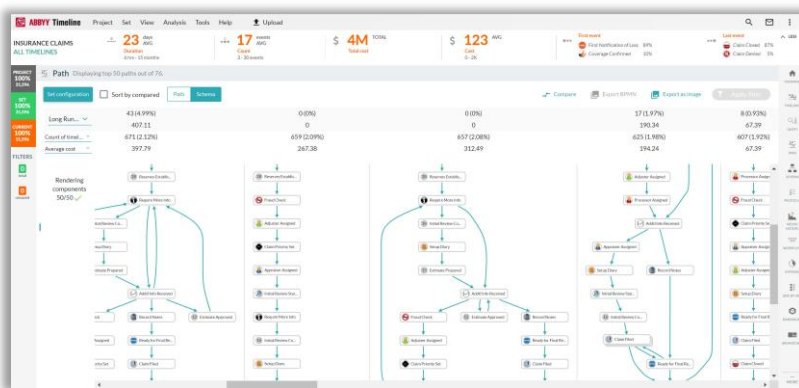
Timeline collects process-related data generated from Blue Prism's software robots, making it easier and faster to discover, analyze, and automatically monitor real-time process flows. Access to detailed process insights helps organizations **clearly set ROI expectations, assure agile service delivery, and realize the benefits of an improved customer journey**, including:

- **Reduced RPA implementation time:** Quickly identify processes with the greatest automation potential.
- **Increased efficiency and improved Digital Workforce productivity:** Expose redundant, broken or poorly executed processes, and quickly identify those with the greatest automation potential.
- **Post-RPA visibility:** Understand how automated processes interact with other process tasks with automatic deployment of RPA resources.

# Technology Alliance Program

## Blue Prism & ABBYY Timeline: Raise Your Process IQ with Actionable Insight

Clearly identifying automation-friendly processes, while avoiding poorly designed or broken processes, is critical for agile service delivery. Manual evaluation of process execution is also time-consuming and costly – and only gives organizations a partial glimpse into process management.



Timeline gives enterprises the **ability to understand “as-is” process states for a more complete picture** to view process execution in the context of time, rather than through snapshots. The solution also **easily aggregates process data easily and cost-effectively** across disparate systems and reconstitutes it as an interactive model – essentially creating your organization’s process digital twin.

## Summary

The Blue Prism/Timeline integration offers easy access to “drag-and-drop” artificial intelligence for **instant connection to the Timeline process intelligence solution**—all while building a process within Blue Prism. Together, Blue Prism and Timeline collect data generated from Blue Prism’s Digital Workforce for faster discovery, analysis, and automatic robotic monitoring and remediation of real-time process flows.

## About Blue Prism

As the pioneer, innovator and market leader in Robotic Process Automation, Blue Prism (AIM: PRSM) delivers the world’s most successful Digital Workforce. The company’s intelligent digital workers provide business leaders with new operational capacity and intelligent skills to automate mission critical business processes, while meeting the requirements of the most demanding IT environments, where security, compliance and scalability are paramount. Blue Prism provides a scalable and robust execution platform for best-of-breed AI and cognitive technologies and has emerged as the trusted and secure RPA platform of choice for the *Fortune 500*. For more information, visit [www.blueprism.com](http://www.blueprism.com).

## About ABBYY

ABBYY is a global leader in digital intelligence solutions and services. ABBYY offers a complete range of AI-based technologies and solutions transforming business documents and content into business value. By providing digital transformation solutions to financial services, insurance, transportation, healthcare and other industries, the company helps organizations achieve the next wave of growth by understanding customers and delivering responsive real-time intelligent systems. For more information, visit [www.abbyy.com](http://www.abbyy.com).